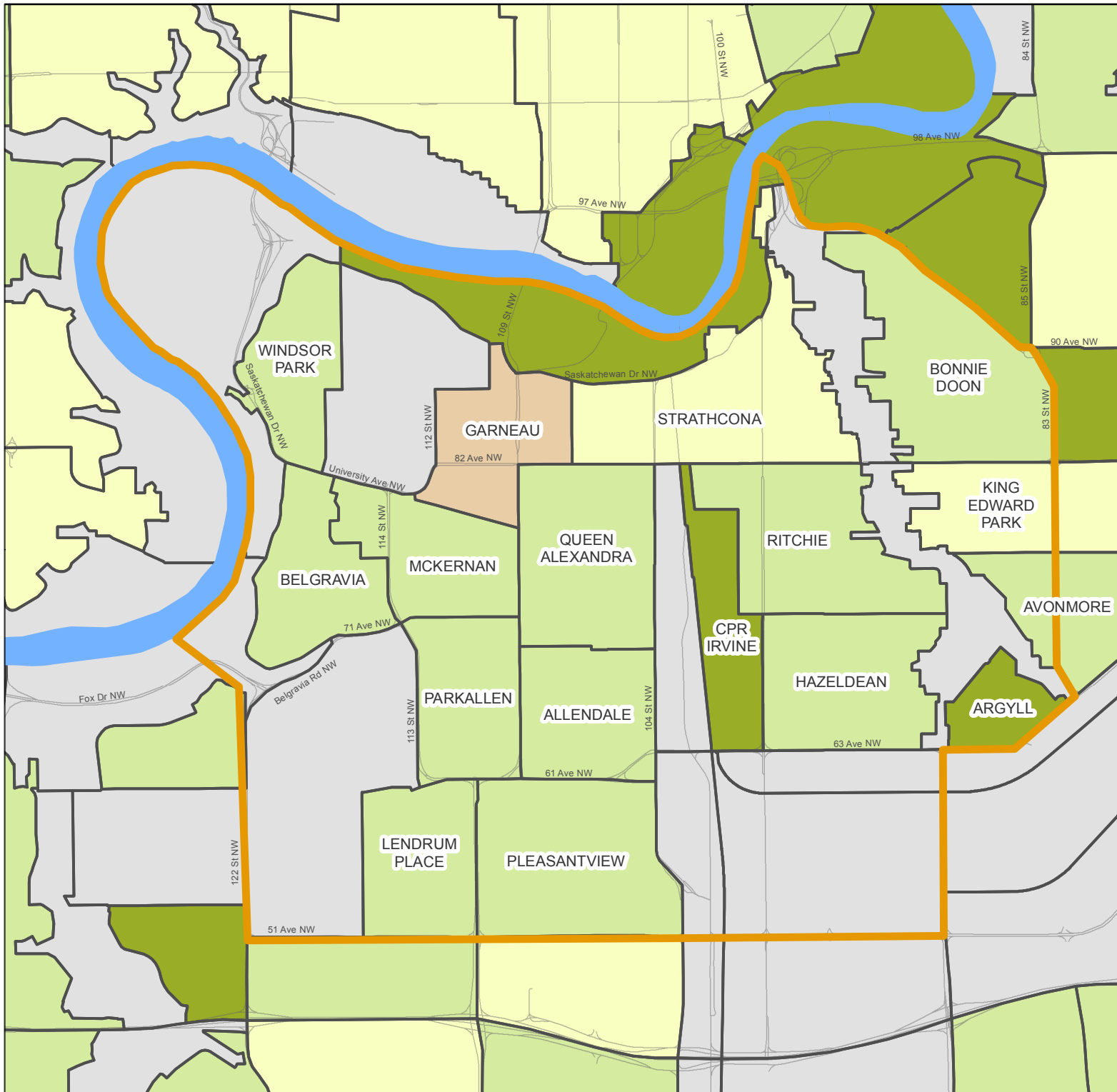


Population Ages 15 - 19 in Old Strathcona

Municipal Census 2016 by Neighbourhood



Population 15 to 19

- 0 - 62
 - 63 - 134
 - 135 - 221
 - 222 - 347
 - 348 - 495
 - No Data\Industrial
- Edmonton Mean: 128**

 Old Strathcona Boundary

Data Sources: Demographic data provided by the City of Edmonton, Census 2016; Spatial data provided by DMTI.
Map Name: OS_Pop15to19_MunCensus2016_0217

This map was created for the purposes of collaborative planning. The information presented in the map is accurate to the best of our knowledge using the data available. We accept no liability for the use or misuse of this information.

M.A.P.S. Alberta Capital Region 02/2017

