

Percentage of Population Ages 55 - 64 in Old Strathcona

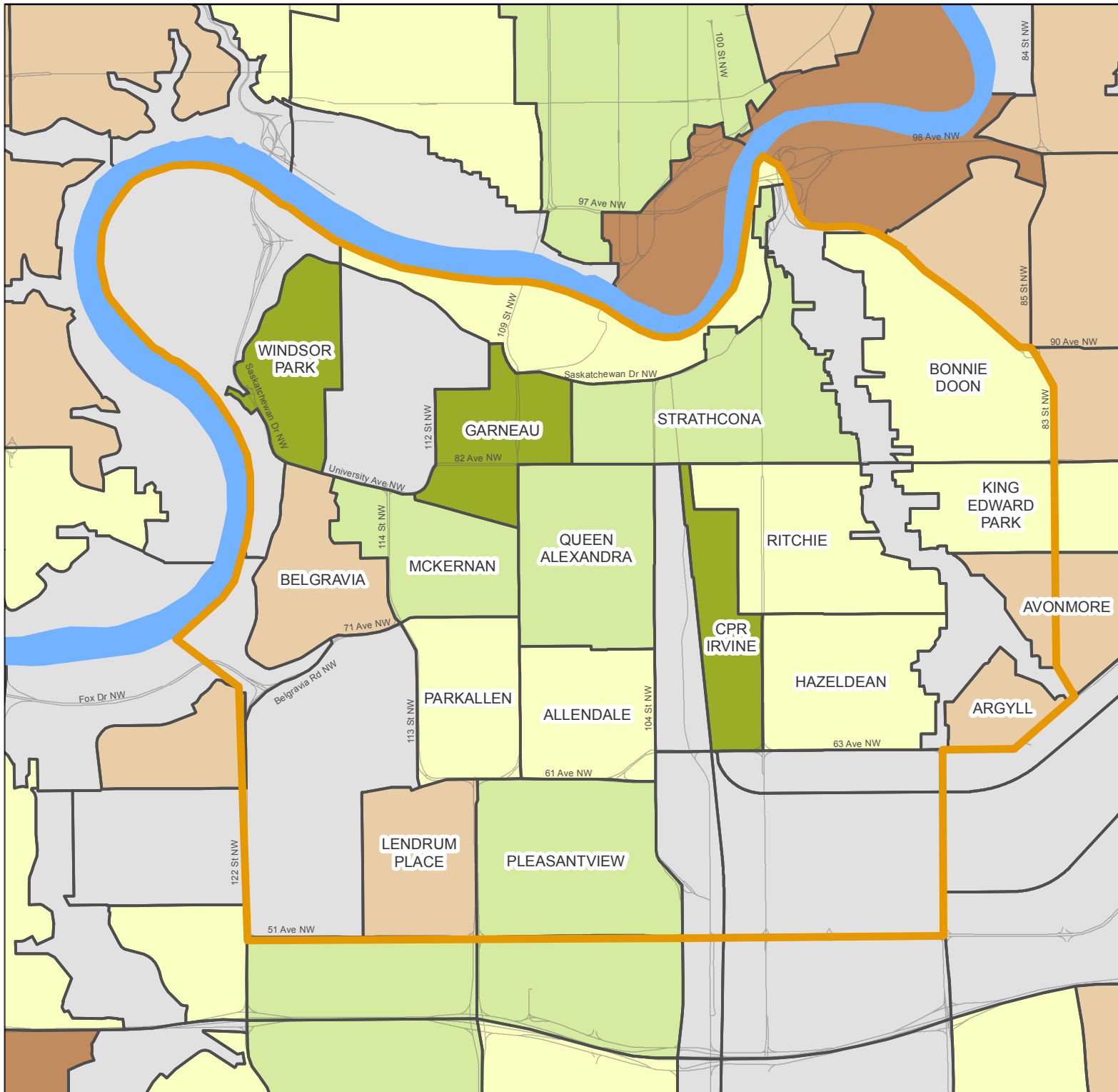
Municipal Census 2016 by Neighbourhood

Population 55 to 64 (%)

- 0.0% - 7.6%
- 7.7% - 11.3%
- 11.4% - 14.3%
- 14.4% - 17.9%
- 18.0% - 43.6%
- No Data\Industrial

Edmonton Mean: 13.5%

 Old Strathcona Boundary



Data Sources: Demographic data provided by the City of Edmonton, Census 2016; Spatial data provided by DMTI. Map Name: OS_%Pop55To64_MunCensus2016_0217

This map was created for the purposes of collaborative planning. The information presented in the map is accurate to the best of our knowledge using the data available. We accept no liability for the use or misuse of this information.

M.A.P.S. Alberta Capital Region 02/2017

