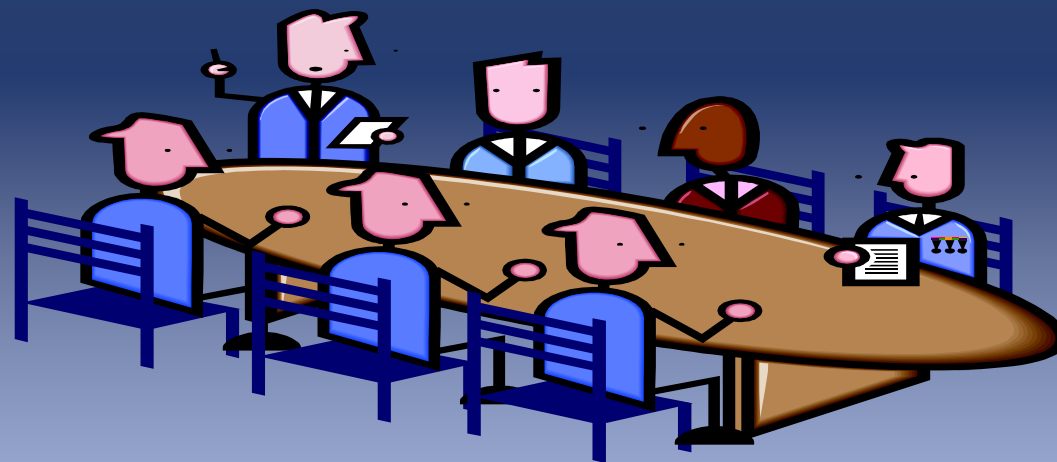


PARKLAND & AREA COMMUNITY PARTNERSHIP





“The Large Group”

- Was first called upon to validate the maps that resulted from the Social Mapping Project
- Were brought together again to discuss the needs and gaps in service they saw.
- Took part in a facilitated process to help identify priorities for action.



Priorities

Common Intake/Case Conferencing
Family Violence
Parent Education/Role Modeling



Critical Connections

- A monthly meeting of front line staff of human service agencies in the Parkland Region
- Sharing information on their individual mandates and on resources that might be helpful to others in the group.
- Discussing “difficult cases” and working together to find solutions for them.
- Establishing positive relationships that will assist in identifying resources and supports for mutual clients.

The Core Group:

- Child & Family Services
- Alberta Immigration & Employment
- FCSS – Spruce Grove, Stony Plain & Yellowhead County
- Primary Care Network – Social Services Coordinator
- NeighbourLink Parkland
- Parkland Food Bank
- Alberta Health Services – Mental Health
- Minister Fred Lindsay's Office
- Bredin Institute
- Alberta Parenting for the Future

Others Who Have Attended:

- Victim Services
- Probation
- Turning Points Society
- Minister Doug Horner's Office
- Paul Band
- The Thrift Shop
- Big Brothers/Big Sisters
- Parkland Day Homes
- Alberta Seniors and Community Supports
- Tri-Community Health & Wellness Foundation
- Alberta Works
- Coordinated Suicide Prevention Program
- Catholic Social Services – Coaching Families program

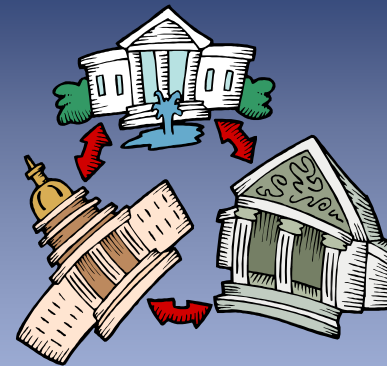


Issues:

- The increasing number of clients requiring AISH – how to help them
- The need for subsidized recreation for adults – TLC for Everyone
- The lack of housing for clients on AISH and Income Support – Stony Community Villas, Martyshuk Housing
- Mental Health clients – RPACT

Joint Activities:

- A joint meeting with Response to Family Violence – resource directory for front line staff serving victims of family violence
- Meeting with the Ministers – a discussion with Ministers Jablonski, Denis, Redford, Klimchuk, & Blackett



Response to Family Violence

- Working toward the establishment of a specialized Family Violence Court in Parkland.
- Seeking resources to increase the program capacity of Turning Points Society.
- Compiling a list of the services and contact information related to family violence in the Parkland Region
- Offering educational opportunities to the community relative to the issue of family violence

Composed of:

- Chaired by RCMP Constable Janine Peter.
- RCMP
- Safe City
- CFSA – Ernie Pudwill
- FCSS – Spruce Grove, Stony Plain, & Yellowhead County
- Alberta Employment & Immigration
- Alberta Works
- Victim Services
- Probation
- Alberta Justice – Prosecution
- Parkland Turning Points
- Child & Family Services
- Alberta Seniors and Community Supports
- Paul First Nation – Community Wellness/Health & Wellness
- Enoch Counselling
- Albert Health Services – Mental Health
- Coordinated Suicide Prevention



Community Education Initiatives

- Val Campbell Presentation
- Understanding Privacy Legislation – Oct. /10
- Family Violence Article in the Examiner – Nov./10
- And Overview of the Residential Schools from the Beginning – Dec./10
- Presentations to: The Rotary Club, NeighbourLink Parkland – Feb./11
- Emergency Protection Orders & More – Apr./11
- A Rural Perspective on Family Violence – Apr./11
- Through the Eyes of a Child – May./11
- Family Violence 101 – June /11

Project Up-date

- A Parkland Region Specialized Family Violence Court is expected to be operational by the end of 2011
- Turning Points Society is awaiting the results of their SCIF funding proposal.



Why the Partnership is Succeeding

- Previous Relationships
- Opportunities to get together
- A starting point for conversation
- Openness to ideas
- Facilitation – Deborah
- Trust – a willingness to work toward common goals.
- Communication and Administration

